

TECHNICAL SERVICES

(INFRASTRUCTURE DESIGN, PLANNING AND IMPLEMENTATION)

7 Critical Capital Infrastructure Projects (CCIPs)

AIRSTRIP



Both Ihu and Baimuru airstrips have been rehabilitated by KDDA in partnership with RAA. ISEZ MOU Agreement with development partner are now redesigning for larger capacity airport for Ihu airstrip.

JETTIES AND SEAPORT



Two sites have been selected. Concept design and Feasibility Studies in progress after MOU has been signed. Contract for EPC is in progress. MOU has been signed for project to start.

RURAL WATER SUPPLY PROJECT



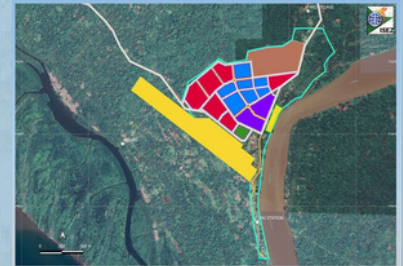
A Feasibility Study has been funded by KDDA at Belepa and completed by Fimali. ISEZ and KDDA working on funding of the project in Partnership with Water PNG.

TELECOMMUNICATION PROJECT

1. Contracts for 3 additional towers have been identified. Design and costing have been completed. Funding of the towers is in progress.
2. MOU with DataCo PNG signed to facilitate for Fibre Optic Substation in Ihu and distribution to other regional areas.



TOWNSHIP PROJECT



IHU TOWNSHIP PLANNING STAGE – ZONING & COLOR CODING

Ihu township development concept selection completed. Physical Planning has been finalised and ready to be submitted to Department of Lands and Physical Planning. Once approved Civil Works to start.

RING ROAD DEVELOPMENT PROJECT



Sector 1: Peto - Vailala 47km road completed.
 Sector 2: Ihu to Harevavo 15km, 5km has been completed.
 Sector 3: Ihu to Muro - 21.5km, K81.5 million grant funding secured from Chinese Government.
 Sector 4: Muro to Kaumea - 74km scoped by DOWH & ISEZ
 DOWH, ISEZ, KDDA, CHEC working in partnership to complete Kerema to Purari Highway and Bridges program.

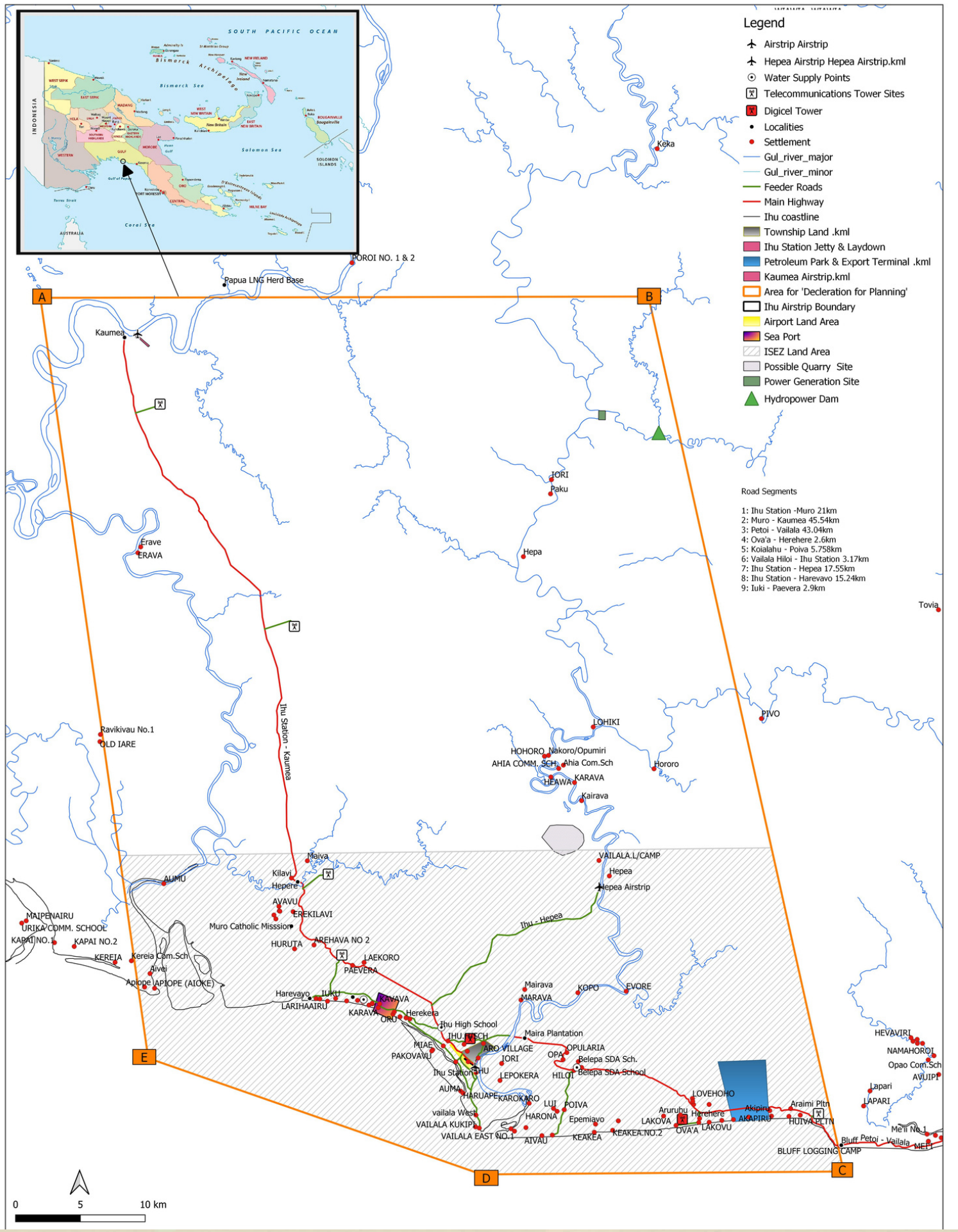
ELECTRIFICATION PROJECT



KDDA approved and awarded contract for power generation site improvement. ISEZ and Wartsila have signed MOU to design and develop industrial capacity power generation and transmission for ISEZ industries and other regional power requirements.

Area under Physical Planning consideration with DLPP

The area inside the orange line is the project site. Its for Physical Planning purposes which includes roads, telecommunication towers, power generation and transmission, water supply, airport, seaport and township.



Legend

- ✈ Airstrip Airstrip
- ✈ Hepea Airstrip Hepea Airstrip.kml
- ⊙ Water Supply Points
- ⊠ Telecommunications Tower Sites
- ⓧ Digital Tower
- Localities
- Settlement
- Gul_river_major
- Gul_river_minor
- Feeder Roads
- Main Highway
- Ihu coastline
- Township Land .kml
- Ihu Station Jetty & Laydown
- Petroleum Park & Export Terminal .kml
- Kaumea Airstrip.kml
- Area for 'Declaration for Planning'
- ⬜ Ihu Airstrip Boundary
- Airport Land Area
- Sea Port
- ISEZ Land Area
- Possible Quarry Site
- Power Generation Site
- ▲ Hydropower Dam

Road Segments

- 1: Ihu Station - Muro 21km
- 2: Muro - Kaumea 45.54km
- 3: Peto - Vailala 43.04km
- 4: Ova'a - Herehere 2.6km
- 5: Koialahu - Poiva 5.758km
- 6: Vailala Hiloi - Ihu Station 3.17km
- 7: Ihu Station - Hepea 17.55km
- 8: Ihu Station - Harevavo 15.24km
- 9: Iuki - Paevera 2.9km

